



**PORT  
LABS**

**2044 Franklin Street  
Oakland, CA**

**INNOVATION  
CENTER**

## A great place to work

- Spacious interior with high ceilings and abundant natural light
- Common kitchen, lounge, conference rooms, and event space
- 4k sqft rapid prototyping shop with electronics benches, 3d printers, laser cutters, tools, supplies and skilled staff to help when you need it
- Near Lake Merritt, 19th St. BART Station, and Oakland's best restaurants

## A home for companies developing hard products

Our companies are working in consumer goods, IoT, electronics, climate tech, medical devices and more

- Regular member-only events
- Sponsored support programs for company development
- Innovation ecosystem happenings—pitch competitions, sponsored residencies, networking events, and more!

## Private spaces & co-working memberships

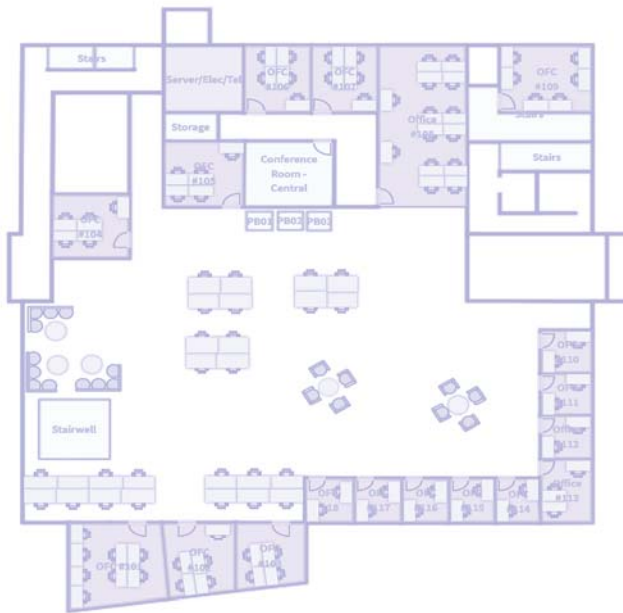
- **Offices** for individuals and teams, many featuring exterior windows
- Floating and dedicated **desks**
- **Engineering benches** for prototyping, testing, and small batch production
- **Flexible Space for equipment**, configured for your team's needs
- Limited **onsite parking** for your team and visitors
- **Flexible terms** — from month-to-month to 12 months

## Included in all memberships

- 24/7 access to both Port Labs locations
- Staff office hours
- Free indoor bike parking
- Bookable event spaces with available event planning services
- Private terrace and rooftop overlooking Lake Merritt

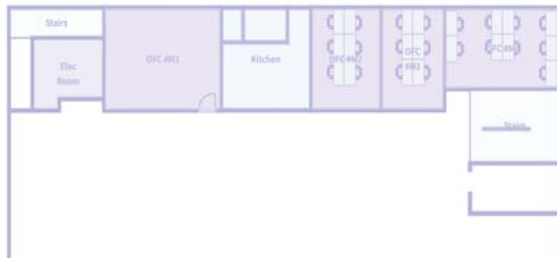


# 2044 Franklin St. Floor Plans



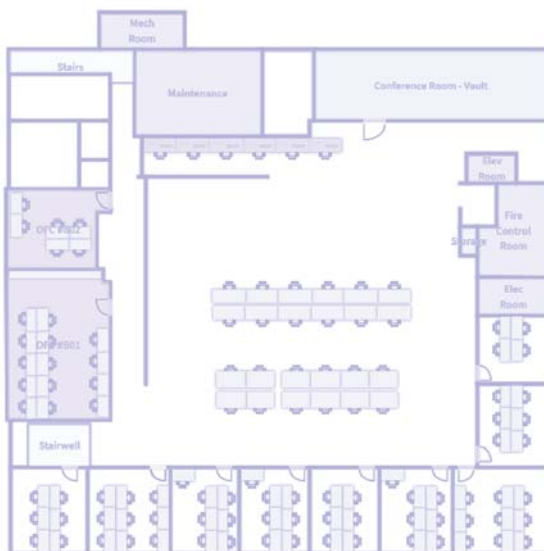
## Main Floor

- 1-2 person modular offices with abundant natural light (many units with floor-to-ceiling windows)
- Several larger offices, many with exterior windows
- Huddle spaces, flexible event space
- Indoor Bike Parking



## Mezzanine

- Full Kitchen
- Large private offices with floor-to-ceiling windows
- Common space for dining, meeting, working



## Basement

- Dedicated engineering benches
- Dedicated desks
- Flexible engineering space for equipment and materials
- Several larger modular offices coming in phase 2 (2023)

**Contact: Matthew Kelly**  
[matthew@portlabs.co](mailto:matthew@portlabs.co)